



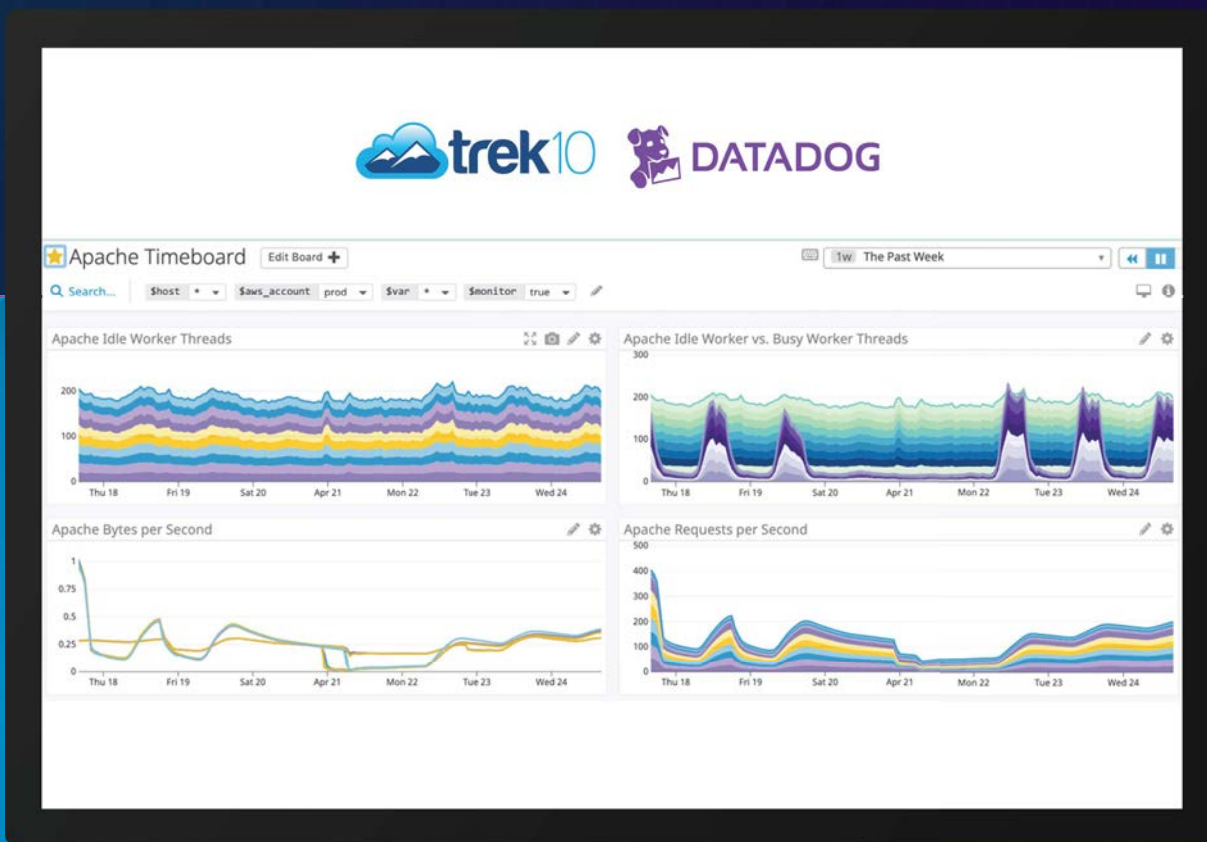
WORKSHOP

So you've decided to take your cloud native AWS operations to the next level by leveraging the most powerful monitoring tool in the world... now what? Getting started with Datadog is no easy task thanks to its numerous powerful features. Trek10, a next-generation consulting partner and certified AWS MSP (and the first-ever certified Datadog partner!), is here to help you sift through Datadog's features – from creating simple monitor #1 to leveraging all the advanced, powerful features that Datadog has to offer.



Premier Consulting Partner

- IoT Competency
- SaaS Competency
- DevOps Competency
- Migration Competency
- Public Sector Partner



In this two-day workshop, Trek10's CloudOps experts share their philosophy on monitors, dashboards, and overall performance monitoring, while providing the tricks, tips, and pitfalls to maximize the value of Datadog. Applying experience from its 5+ years of 24/7 monitoring and operations on AWS, the Trek10 team distills the learning into an interactive and hands-on workshop. Your organization will come away with the knowledge needed to extract the full value that Datadog has to offer, while knowing what to look out for to avoid mistakes in deployment.

TWO-DAY WORKSHOP PROGRAM

DAY 1 - AM



DATADOG PRESENTATION, THEORY, AND Q&A

Interactive presentation where your team will be exposed to the full Datadog Suite, especially how solutions fit together to provide full visibility into your applications to improve incident detection, overall troubleshooting time, and reduce noise.

MONITORING

Deep insight into all of Datadog's monitoring capabilities including: deploying and configuring agents, events, dashboards, metrics, and much more. Review types of monitors and how to code define them with Datadog API.

LOGS

How to push AWS and server logs to Datadog and how to use smart surfacing of logs as troubleshooting support. An overview of log pipelines, patterns, and indexing; plus examples on how to leverage NGINX agent configuration and AWS serverless.

APPLICATION PERFORMANCE MANAGEMENT

Provide additional visibility and traceability to help your application reach peak performance. Review on how to implement APM, the Service Map, and the service dashboard & monitoring.



DAY 1 - PM

DAY 2 - AM/PM

HANDS ON

A hands-on demo, presentation, and Q&A for full end-to-end monitoring with a review of recommended runbook actions integrated into Datadog monitors for two application blueprints.

SELECT 2 APPLICATIONS AND CONFIGURE LIVE MONITORS

A step-by-step lab to implement Datadog across 2 previously selected application blueprints. From 100% EC2-based architectures to AWS managed services, to serverless, IoT, containers, and more - there's a blueprint that fits each infrastructure use case.

BUILD BEST PRACTICE RUNBOOK ACTIONS

Training on best practices to integrate runbook actions into your Datadog monitors and how to integrate Datadog with your ticketing solution. Training on the "gold standard" for dashboards and monitors, and how to use Datadog logs to support troubleshooting alongside your runbook actions.

OUTCOMES:

- Significant progress in understanding of Datadog solution suite and the long-term business value
- Ability to begin building out robust production monitoring, log analysis, and traceability
- Step-by-step, hands on Datadog demos with sample applications that can be leveraged for employee training
- 100+ best practice monitors and 35+ dashboards
- Deep understanding of the most common and painful pitfalls in implementing and configuring Datadog